

INNOVATION LEADS TO VALUE



SUNWARD

SWE135E-3H MEDIUM-EXCAVATOR

◆ Total weight:13.98t

◆ Engine power:86kW/2200rpm

◆ Bucket capacity:0.6m³



- ◆ International famous brand engine with large power reserve and high power is used, which is reliable and durable.
- ◆ A large-displacement main pump and large-flow main valve are used, which have high efficiency and significant energy-saving.
- ◆ Heavy-duty moving arm and bucket bar, large excavator design standard, and higher reliability.
- ◆ 0.6 cubic meters double-curve reinforced bucket is equipped as standard, with low digging resistance and high efficiency.
- ◆ The whole vehicle has larger space for convenient maintenance activities.
- ◆ Bulldozing shovel and crushing hammer could be selected for more working conditions.

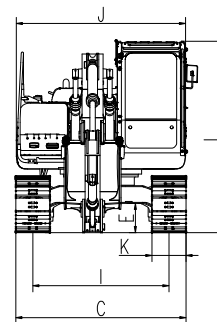
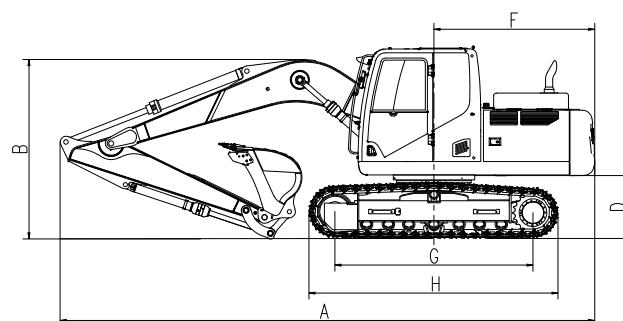
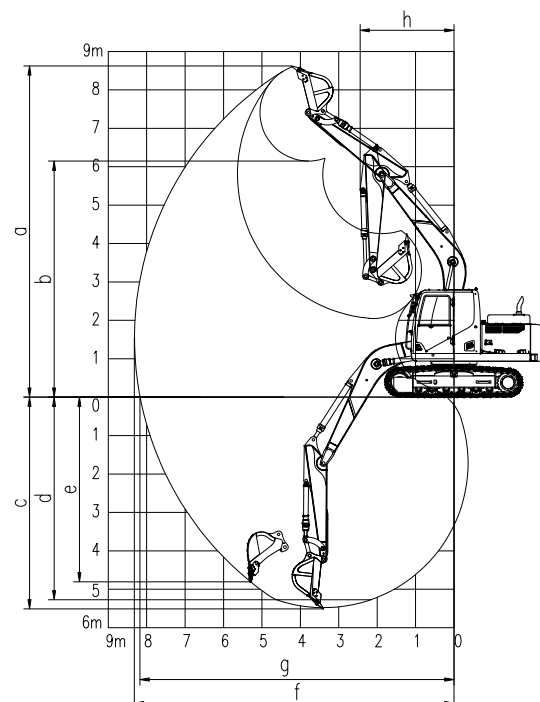


Parameters and performance of the main machine

Weight of whole machine	t	13.98
Standard bucket capacity	m ³	0.6
Digging force of bucket	kN	100
Digging force of arm	kN	76
Max. traction	kN	115
Traveling speed(Max/Min)	km/h	6.0/3.5
Gradeability	°	35
Ground pressure	kPa	42.8
Slewing speed	rpm	11
Engine	Brand	Cummins
	Model	QSF3.8
	Type	4-stroke water cooling supercharging
	Displacement	L 3.76
	Power/rpm	kw/rpm 86/2200
Fuel tank capacity	L	245
Primary pump	Type	2 x piston variable pump
	Flow rate	L/min 2x142.5
Pressure of main relief valve	MPa	34.3
Hydraulic oil tank capacity	L	150

Working range

	Boom length	mm	4600
	Arm length	mm	2500
a	Max. digging height	mm	8640
b	Max. dumping height	mm	6145
c	Max. digging depth	mm	5525
d	Digging depth (2.44m: horizontal)	mm	5320
e	Max. vertical digging depth	mm	4930
f	Max. digging radius	mm	8330
g	Max. digging reach at ground level	mm	8150
h	Min. front slewing radius	mm	2530



Outline dimension

A	Total length	mm	7840	H	Total track length	mm	3650
B	Total height	mm	2850	I	Track distance	mm	2000
C	Total width	mm	2500	J	Track width	mm	2500
D	Ground clearance of platform	mm	940	K	Width of track link	mm	500
E	Chassis ground clearance	mm	410	L	Cab roof height	mm	2825
F	Platform tail slewing radius	mm	2355	N	Upper-structure width	mm	2490
G	Wheel tread	mm	2915				

★ The above parameters may be different due to product upgrading.

