

INNOVATION LEADS TO VALUE



SWE150E MEDIUM-EXCAVATOR

◆ Total weight:14.1t

◆ Engine power:84kW/2200rpm

◆ Bucket capacity:0.6m³



- ◆ The five supports of the working device are forged, and the side beams of the rotary platform are D-shaped beams to improve the strength.
- ◆ It can be equipped with bulldozer, crushing hammer, special clamping jaws for forestry machines and chassis, which makes it adaptable to a wide range of working conditions.
- ◆ It is equipped with Isuzu National III engine with good oil adaptability.
- ◆ The four filter cores and pilot solenoid valve are centrally arranged. All filter cores could be replaced and maintained by standing on the ground, which is convenient.
- ◆ Vehicle bottom sealing plate is installed as standard to protect hydraulic pipeline. Inclined track beams are used to minimize dirt accumulation.
- ◆ The safe and comfortable driving cabin has passed the TOPS/FOP/ROPS certification.



Parameters and performance of the main machine

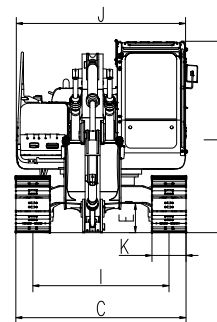
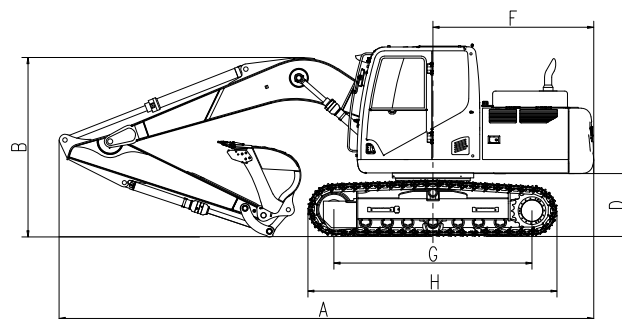
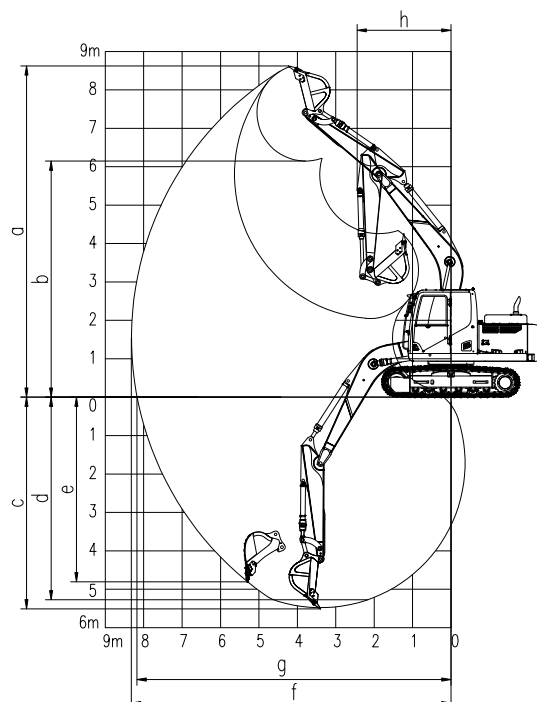
Weight of whole machine	t	14.1
Standard bucket capacity	m ³	0.61
Digging force of bucket	kN	100
Digging force of arm	kN	76
Max. traction	kN	115
Traveling speed(Max/Min)	km/h	5.5/3.2
Gradeability	°	35
Ground pressure	kPa	43.2
Slewing speed	rpm	11
Engine	Brand	ISUZU
	Model	4JJ1
	Type	4-stroke water cooling supercharging
	Displacement	L 2.999
	Power/rpm	kw/rpm 84/2200
Fuel tank capacity	L	245
Primary pump	Type	2 x piston variable pump
	Flow rate	L/min 2x120
Pressure of main relief valve	MPa	31.4/34.3
Hydraulic oil tank capacity	L	150

Working range

	Boom length	mm	4600
	Arm length	mm	2500
a	Max. digging height	mm	8600
b	Max. dumping height	mm	6145
c	Max. digging depth	mm	5530
d	Digging depth (2.44m: horizontal)	mm	5320
e	Max. vertical digging depth	mm	4930
f	Max. digging radius	mm	8330
g	Max. digging reach at ground level	mm	8185
h	Min. front slewing radius	mm	2575

Outline dimension

A	Total length	mm	7840	H	Total track length	mm	3650
B	Total height	mm	2850	I	Track distance	mm	1990
C	Total width	mm	2490	J	Track width	mm	2490
D	Ground clearance of platform	mm	940	K	Width of track link	mm	500
E	Chassis ground clearance	mm	410	L	Cab roof height	mm	2850
F	Platform tail slewing radius	mm	2355	N	Upper-structure width	mm	2490
G	Wheel tread	mm	2915				



★ The above parameters may be different due to product upgrading.

