

INNOVATION LEADS TO VALUE



SUNWARD

SWE335F LARGE-EXCAVATOR

◆ Total weight: 32.5~32.8t

◆ Engine power: 212kW/2000rpm

◆ Bucket capacity: 1.6~1.7m³



◆ New shape

The new appearance of the new generation of F series family could create a magnificent style of the whole machine. More mining elements are added to modeling design to show its beauty and power at the same time.

◆ High power reserve and large digging force

The machine is equipped with a powerful 212kW Isuzu engine.

High efficiency and energy saving hydraulic system is used, and the bucket digging force could reach 214kN, which can be easily handled in heavy-duty working conditions.

◆ High efficiency and energy saving

High-efficiency, large-displacement hydraulic system is used, and 2.9m short bucket bar and 1.7m³ double-curve reinforced bucket are provided to realize the perfect proportion of the working device according to the working conditions.

◆ Reliable and durable

Heavy load working device with 36t class die forging support.

The lower vehicle assembly is installed with 36t class chassis system, and the four wheels and one belt are reliable and durable, with excellent carrying capacity.

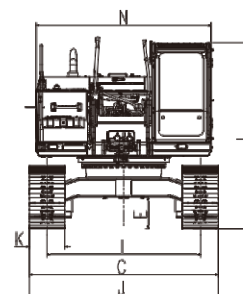
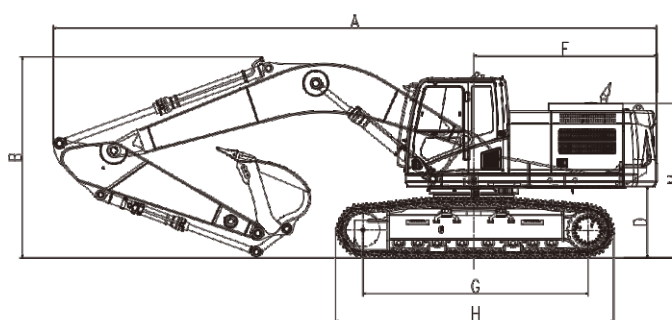
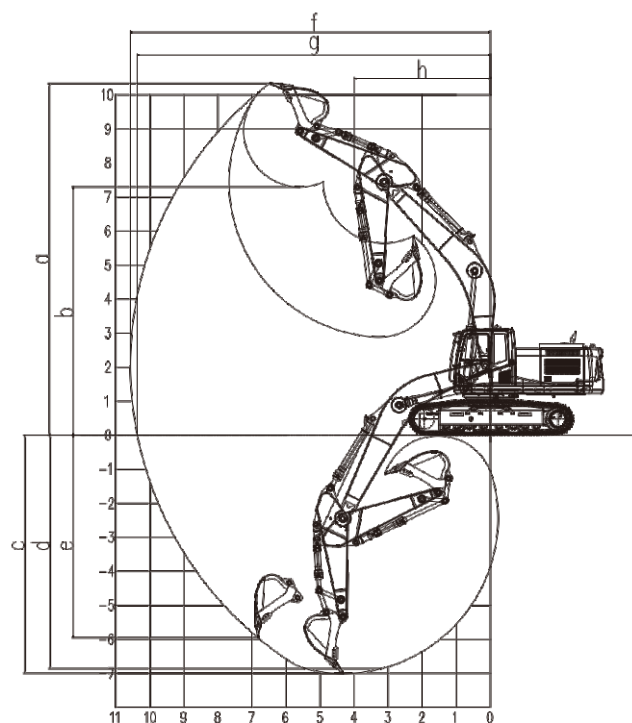


Parameters and performance of the main machine

Weight of whole machine	t	32.5-32.8
Standard bucket capacity	m ³	1.6-1.7
Digging force of bucket	kN	214
Digging force of arm	kN	170
Max. traction	kN	297
Traveling speed(Max/Min)	km/h	5.8/3.6
Gradeability	°	35
Ground pressure	kPa	62.3
Slewing speed	rpm	11.42
Engine	Brand	ISUZU
	Model	GH-6HK1
	Type	High-pressure common rail
	Displacement	L 7.79
	Power/rpm	kw/rpm 212/2000
Fuel tank capacity	L	520
Primary pump	Type	2 x piston variable pump
	Flow rate	L/min 2×296
Pressure of main relief valve	MPa	34.3
Hydraulic oil tank capacity	L	400

Working range

	Boom length	mm	6150
	Arm length	mm	2900
a	Max. digging height	mm	10330
b	Max. dumping height	mm	7280
c	Max. digging depth	mm	7010
d	Digging depth (2.44m; horizontal)	mm	6840
e	Max. vertical digging depth	mm	5920
f	Max. digging radius	mm	10570
g	Max. digging reach at ground level	mm	10370
h	Min. front slewing radius	mm	4005



Outline dimension

A	Total length	mm	10616	H	Total track length	mm	4860
B	Total height	mm	3500	I	Track distance	mm	2590
C	Total width	mm	3190	J	Track width	mm	3190
D	Ground clearance of platform	mm	1235	K	Width of track link	mm	600
E	Chassis ground clearance	mm	530	L	Cab roof height	mm	3230
F	Platform tail slewing radius	mm	3270	N	Upper-structure width	mm	3110
G	Wheel tread	mm	3930				

★ The above parameters may be different due to product upgrading.

